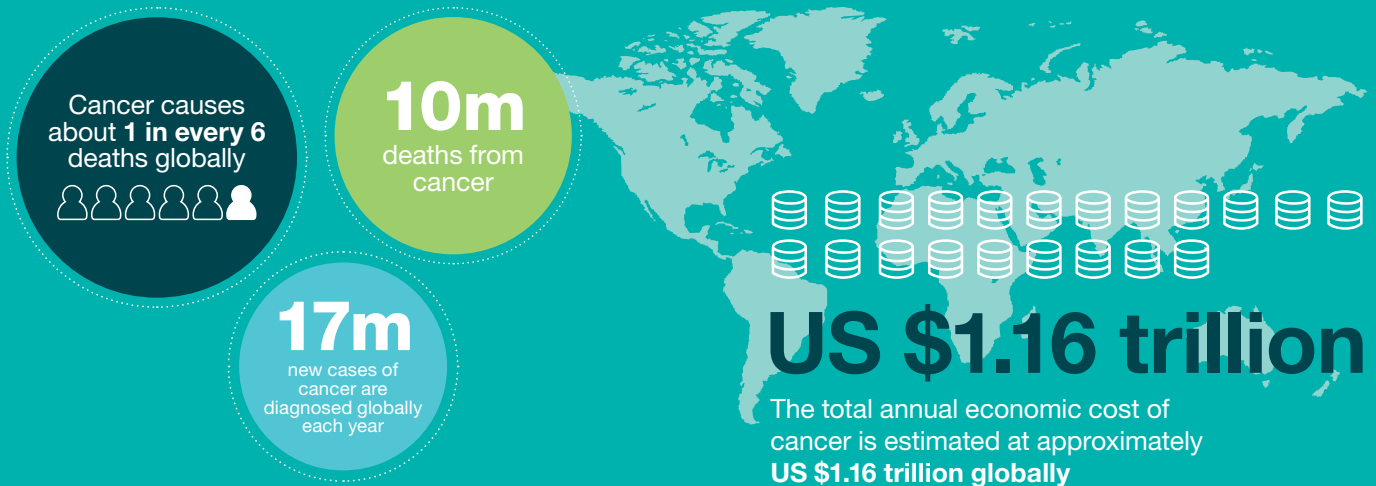


ICON Supports World Cancer Day

ICON is joining other healthcare & patient organisations to raise awareness of cancer on World Cancer Day

Cancer deaths are on the rise worldwide. Each year:



Over the past five years, ICON has contributed to:



775

Oncology and Haematologic Malignancy studies

We have supported studies in over 50 different cancer indications with significant experience in:

- breast cancer
- lung cancer
- leukemia
- lymphoma & multiple myeloma
- skin cancers
- gastric cancer
- bladder cancer
- colorectal cancer
- head and neck cancer
- prostate cancer
- renal cell carcinoma
- pancreatic cancer



123,600+

Patients



32,400+

Sites



Genetic mutations play a role in **5-10% of cancers**

Immuno-Oncology continues to play a more relevant role in cancer treatment and the advent of promising immunotherapies calls for novel approaches to clinical trials.

As an early pioneer in immuno-oncology trials, over the past five years, ICON has supported:



370+

Cancer immunotherapy studies (including 138 cell and gene therapy)



43,410+

Patients



15,150+

Sites

The most common new cases of cancer are:

- 2.26 million **Breast**
- 2.21 million **Lung**
- 1.93 million **Colorectal**
- 1.41 million **Prostate**
- 1.20 million **Skin (non-melanoma)**
- 1.09 million **Stomach**



Around one third of deaths from cancer are due to the five leading behavioural and dietary risks:

- high body mass index
- low fruit and vegetable intake
- lack of physical activity
- tobacco use
- alcohol use



Sources:

<https://www.who.int/news-room/fact-sheets/detail/cancer>
<https://www.worldcancerday.org/what-cancer>